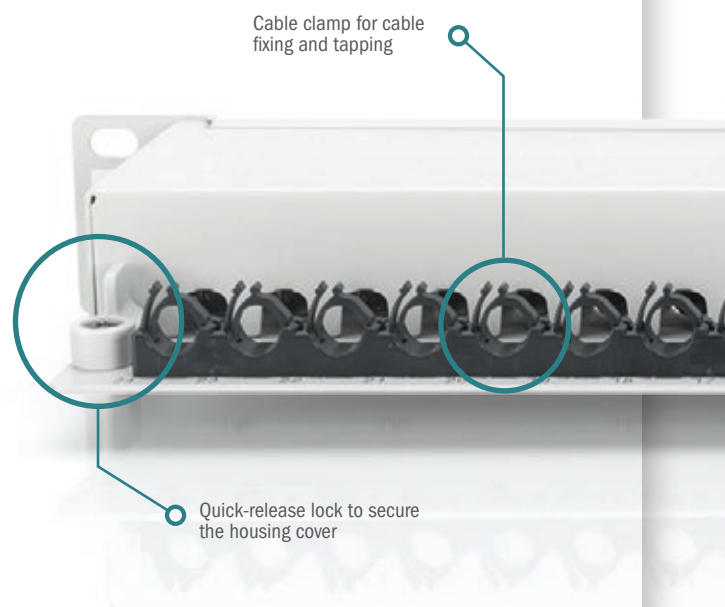




Even faster with DIGITUS[®] Professional patch panels

With our optimized DIGITUS[®] Professional patch panel, we offer you one thing above all – besides longstanding, established features such as integrated dust covers and shielded RJ45 sockets: **Quicker installation that gets by without complicated clamp mounting (cable fixation) and cable ties (tension relief).**

Thanks to manually adjustable **cable clamps**, you are spared all the labor-intensive and time-consuming steps. Furthermore, the costly screwing together of the casing cover is eliminated, since this can be fixed quickly and simply due to more effective **quick fasteners**.



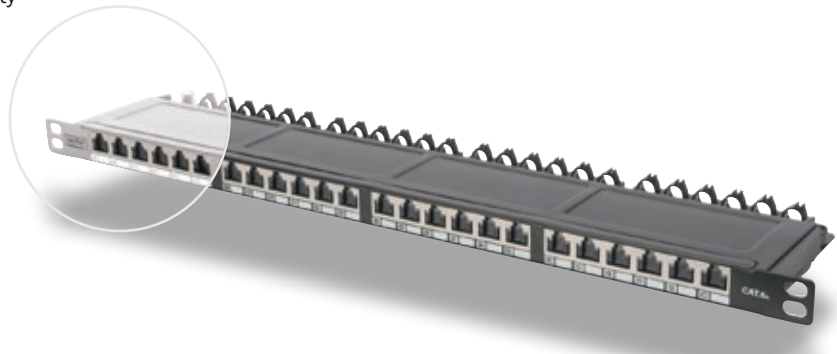
Our products for quick installation:



483 mm (19")-Patch Panel (LSA+) High Density, CAT 6_A

DN-91624S-SL-EA, DN-91624S-SL-EA-G

Save a lot of space (only 0.5U) - With shutters for dust protection - Best performance and link quality for your network.



483 mm (19")-Patch Panel (LSA+) CAT 6_A, shielded

DN-91624S-EA, DN-91624S-EA-B

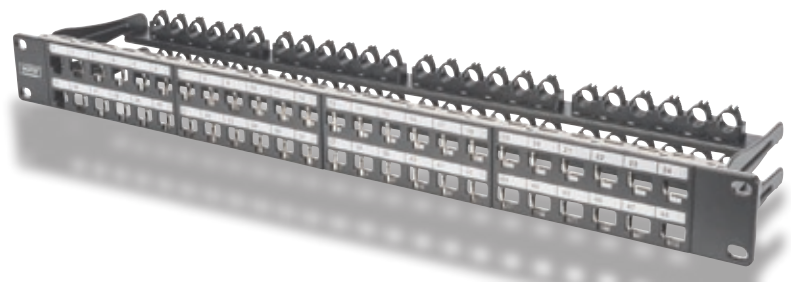
Best performance and link quality for your network.



483 mm (19")-Patch Panel for Keystone Modules, High Density, shielded

DN-91422, DN-91424

The 24-port 0.5U Patch Panel offers a high density. As the panel is only 0.5U in height, it allows to present 48 ports on 1U (2 panels with 24 ports each) which can be installed.



Item Code	EAN	Connection type	Ports	Color	Unit	Shielding
DN-91624S-SL-EA-G	4016032444848	LSA(+)	24	Grey (RAL 7035)	0,5U	Yes
DN-91624S-SL-EA	4016032241614			Black (RAL 9005)		
DN-91624S-EA	4016032288428			Grey (RAL 7035)	1U	
DN-91624S-EA-B	4016032440260					
DN-91422	4016032343295	Keystone	48	Black (RAL 9005)	0,5U	
DN-91424	4016032343318				1U	